

A Guide to SecretAgent® – Entrust® Integration

Version 1.0

Authors: Jonathan Schulze-Hewett, Randy Fulara
Date: August 17, 2006

Abstract: This document provides an overview of how to integrate Information Security Corporation's SecretAgent® file encryption and digital signature utility with Entrust Entelligence with EntrustFile C Toolkit on Windows. The following topics are covered: Installing Entrust support into SecretAgent, configuring a SecretAgent profile to use Entrust for private key operations, certificate lookup and verification, etc., and using SecretAgent when configured to use Entrust.



The information contained in this document represents the current view of Information Security Corporation (ISC) on the issues treated herein as of the publication date. Because ISC must respond to fluctuating market conditions, this document should not be interpreted as a commitment on the part of ISC. ISC cannot guarantee the accuracy of any information presented after the date of publication.

This technical document is for informational purposes only. Information Security Corporation makes no warranties, express or implied, in this document.

Information Security Corporation

1141 Lake Cook Road, Suite D

Deerfield, IL 60015

Inside US: (800) 203-5563

Outside US: (847) 405-0390

Fax: (847) 405-0356

E-mail: sales@infosecorp.com

©2006 Information Security Corporation. All rights reserved.

SecretAgent is a registered trademark of Information Security Corporation. Entrust is a registered trademark of Entrust Incorporated. Other product and company names mentioned in this document may be the trademarks of their respective owners.

TABLE OF CONTENTS

INTEGRATION OVERVIEW	4
REQUIREMENTS	5
INSTALLING ENTRUST INTEGRATION SUPPORT INTO SECRETAGENT	6
CONFIGURING SECRETAGENT FOR ENTRUST INTEGRATION	7
USING SECRETAGENT	8
ADDITIONAL INFORMATION	9

Integration Overview

SecretAgent's Entrust integration allows SecretAgent users to utilize Entrust for private key operations, certificate retrieval, and certificate validation. By leveraging Entrust's infrastructure, SecretAgent users can easily use Entrust's PKI side-by-side with SecretAgent's easy-to-use file encryption for securing data at rest and in transit. SecretAgent can provide Entrust users with the ability to easily and securely communicate with users both inside and outside the organization.

Additionally, SecretAgent DAS (available separately) Community of Interest (CoI) encryption allows users to encrypt documents for frequently changing CoIs. When attempting to decrypt a file, a user's membership in the relevant CoI is checked in real-time. If they are currently a member, they are allowed to decrypt the file regardless of whether they were a member at the time the file was originally encrypted. If they are not a member, decryption rights are denied, even if they were a member when the file was encrypted. This powerful tool provides organization's using Entrust and SecretAgent the ability to more easily manage shifting workgroups and personnel without the expense and time required to re-encrypt files to a new recipients list every time a group's membership changes.

SecretAgent's Entrust integration can be enabled during SecretAgent installation. This assumes Entrust's Entelligence Desktop is already installed. After installation, the user can configure SecretAgent to communicate with Entrust using a simple two-step wizard that automatically finds the user's personal encrypting and signing certificates. Full instructions are provided below.

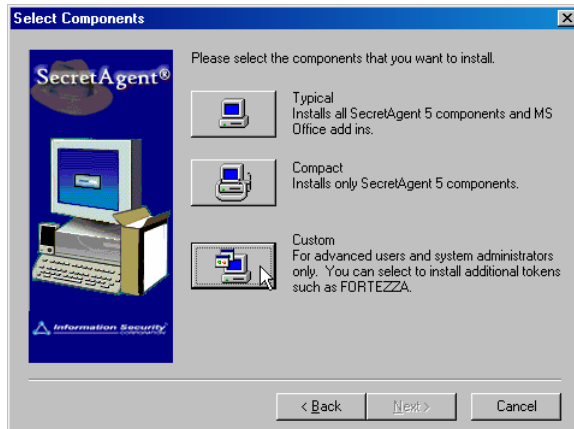
Requirements

SecretAgent requires that Entrust's Entelligence Desktop product be installed and configured for the user or that a user's Entrust Profile be made available. Additionally, the Entrust Authority PKCS#7 Toolkit for C 6.0 SP4 patch 96312 or higher must be installed on the user's system (ISC does not ship or install the required Entrust libraries). This typically requires entapi32.dll, enterr.dll, and etfile32.dll be placed in the SecretAgent installation folder (or be otherwise available in the system's library path).

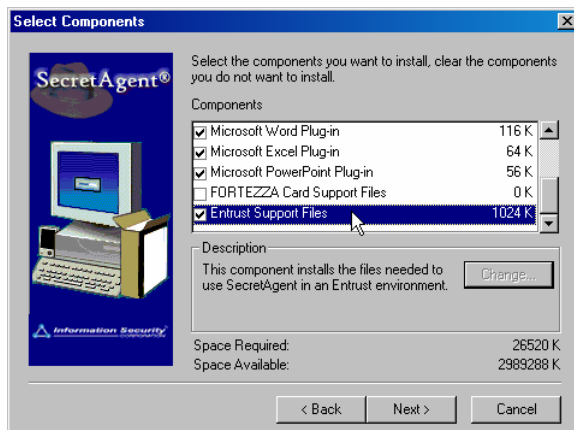
Installing Entrust Integration Support into SecretAgent

Entrust support can be optionally installed when installing SecretAgent. To add Entrust support, follow the SecretAgent installation instructions found in the SecretAgent User's Guide with the following differences:

1. On the Select Components dialog, choose **Custom**.



2. Check **Entrust Support Files** and click **Next**.



3. Continue the installation as described in the SecretAgent User's Guide.
4. After completing the SecretAgent setup, if they are not already in the user's path, copy the Entrust files `entapi32.dll`, `enterr.dll`, and `etfile32.dll` into a location in the user's path.
5. Entrust support should now be installed. The user will need to configure a SecretAgent profile to use Entrust. This process is described in the next section.

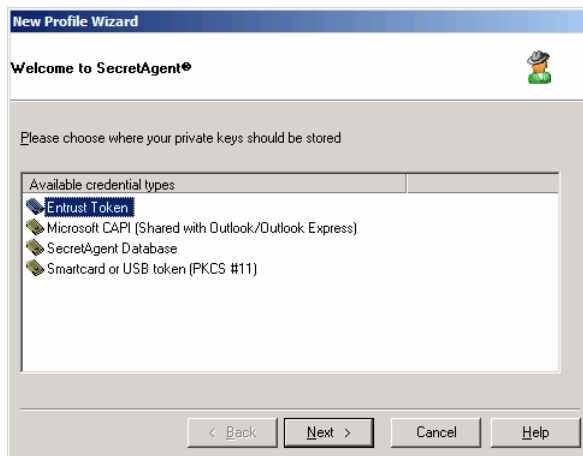
Configuring SecretAgent for Entrust Integration

The first time a user starts SecretAgent they will be led through SecretAgent's New Profile Wizard. This wizard configures the user's profile, including their personal encrypting and/or signing certificates, for use with SecretAgent. To enable Entrust integration on a new SecretAgent installation do the following:

1. Start SecretAgent.

Note: Existing SecretAgent users can configure Entrust integration by creating a new profile. To do this, they can simply start SecretAgent and select **Profile->Manage** from the main menu. Then click **New** and continue to step 2 to continue creating a new Entrust profile.

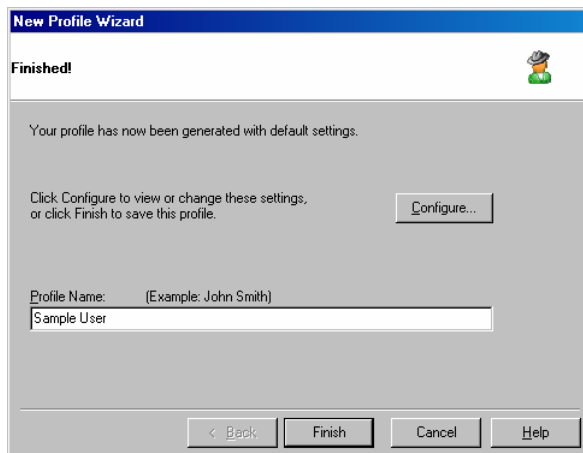
2. In the first screen of the **New Profile Wizard** select **Entrust Token**.



3. Click **Next**.

4. If the user is not currently logged in to Entrust, they will be prompted to authenticate. Authenticate to Entrust.

5. After authentication, SecretAgent will finish configuring the profile. Click **Finish** to begin using SecretAgent.

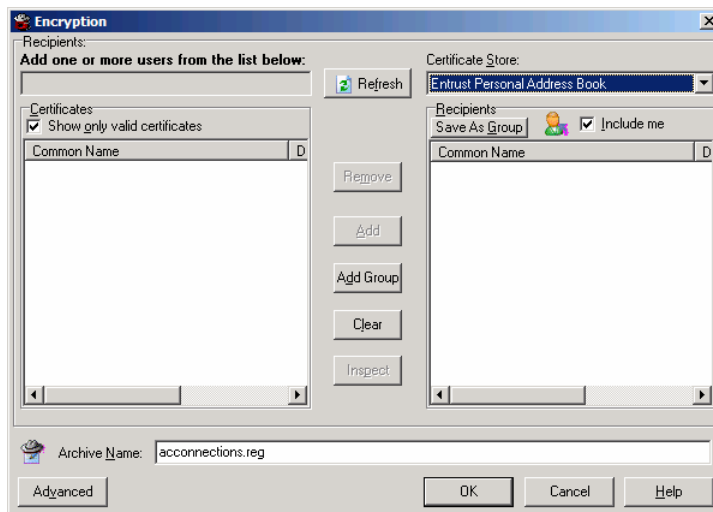


Using SecretAgent

After configuring Entrust integration, the SecretAgent user can use SecretAgent as they normally would. Full SecretAgent usage instructions can be found in the SecretAgent User's Guide.

The differences to the user experience are:

1. If not already done, the user will be prompted to authenticate to Entrust when required (e.g. decrypting a file).
2. Two Entrust certificate stores are automatically added to SecretAgent's Encryption Dialog. This allows users to access their Entrust Personal Address Book and Entrust Groups for selecting recipient certificates. The user can access these stores by choosing them from the **Certificate Store** drop-down menu.



Additional Information

Information Security Corporation (ISC) is headquartered in Deerfield, IL with development offices located in Oak Park, IL and Santa Cruz, CA. The company was founded in 1989 to develop and market data security products. ISC specializes in the design and development of standards-conforming conventional and public key encryption and authentication software.

For further information on ISC products:

<http://www.infosecorp.com/products/contents.htm>

For information of SecretAgent:

<http://www.infosecorp.com/products/secretagent/contents.htm>

For information on SecretAgent DAS:

<http://www.infosecorp.com/products/secretagent/das.htm>

SecretAgent User's Guide:

http://www.infosecorp.com/products/secretagent/pdf/manual_v592.pdf